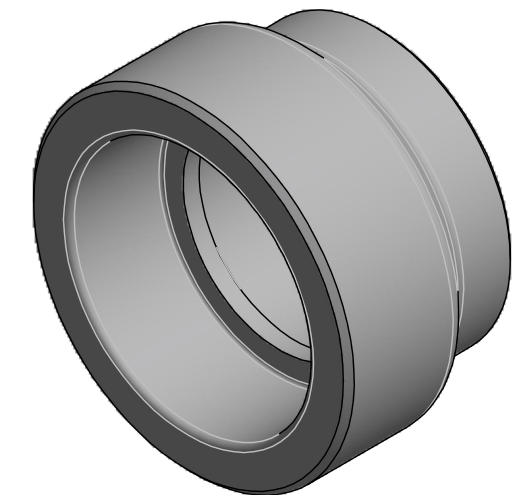


NOTE: WD= welding depth / insertion depth

CODE	Weight lbs/pc	Volume ft ³ /pc	ND1	ND2	D1	D	WD1	WD2	L
27NRC4032	0.102	0.0052	1 1/4" => 40mm	1" => 32 mm	1.18	2.2	13/16	11/16	1.85
27NRC5032	0.117	0.0078	1 1/2" => 50 mm	1" => 32 mm	1.18	2.48	15/16	11/16	2.2
27NRC5040	0.123	0.0073	1 1/2" => 50 mm	1 1/4" => 40mm	1.46	2.48	15/16	13/16	2.05
27NRC6340	0.3	0.0154	2" => 63 mm	1 1/4" => 40mm	1.46	3.39	1 1/16	13/16	2.32
27NRC6350	0.317	0.0162	2" => 63 mm	1 1/2" => 50 mm	1.81	3.39	1 1/16	15/16	2.44
27NRC7550	0.377	0.0218	2 1/2" => 75 mm	1 1/2" => 50 mm	1.81	3.78	1 3/16	15/16	2.64
27NRC7563	0.392	0.0208	2 1/2" => 75 mm	2" => 63 mm	2.28	3.78	1 3/16	1 1/16	2.52
27NRC9050	1.01	0.0519	3" => 90 mm	1 1/2" => 50 mm	1.93	4.72	1 5/16	15/16	4.02
27NRC9063	0.701	0.0361	3" => 90 mm	2" => 63 mm	2.4	4.72	1 5/16	1 1/16	2.8
27NRC9075	0.701	0.0366	3" => 90 mm	2 1/2" => 75 mm	2.83	4.72	1 5/16	1 3/16	2.83
27NRC11075	1.034	0.0588	3 1/2" => 110 mm	2 1/2" => 75 mm	2.83	5.51	1 7/16	1 3/16	3.35
27NRC11090	1.085	0.0606	3 1/2" => 110 mm	3" => 90 mm	3.35	5.51	1 7/16	1 5/16	3.44
27NRC12563	2.295	0.1279	4" => 125 mm	2" => 63 mm	2.44	6.5	1 9/16	1 1/16	5.24
27NRC12575	2.368	0.1404	4" => 125 mm	2 1/2" => 75 mm	2.6	6.5	1 9/16	1 3/16	5.75
27NRC12590	1.792	0.0942	4" => 125 mm	3" => 90 mm	3.39	6.5	1 9/16	1 5/16	3.86
27NRC125110	1.799	0.0942	4" => 125 mm	3 1/2" => 110 mm	4.09	6.5	1 9/16	1 7/16	3.86



NIRON



ITEM:

NRC

DESC: REDUCING COUPLING F/ F SOCKET FUSION

C:\Vault_Temp\Disegni\Schede Tecniche\Niron Grey inches\Socket Fusion Fittings\NI10559.dwg



DRAWING No:
NI10559

SHEET OF REV.
1 1 -5

www.nupiamericas.com - info@nupiamericas.com

All dimensions have to be considered in inches with 5% tolerance if not otherwise mentioned excluding values as per standard ASTM F2389