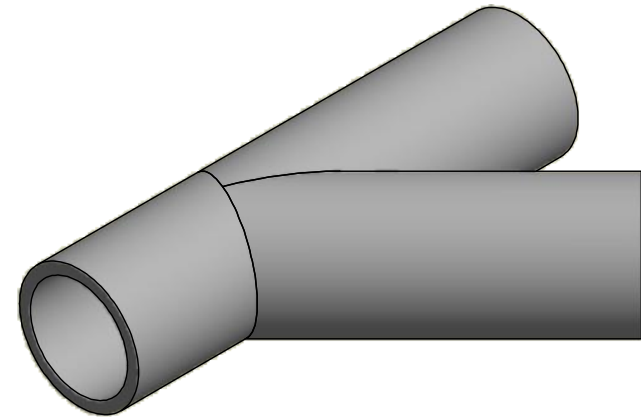


CODE	ND	S	L1	L
27NWYE11090	3" => 90 mm	0.32	7.87	21.89
27NWYE11110	4" => 110 mm	0.39	7.87	21.89
27NWYE11125	5" => 125 mm	0.45	7.87	22.72
27NWYE11160	6" => 160 mm	0.58	7.87	24.65
27NWYE11200	8" => 200 mm	0.72	7.87	29.13
27NWYE11250	10" => 250 mm	0.89	9.84	37.80
27NWYE11315	12" => 315 mm	1.13	9.84	45.28
27NWYE11355	14" => 355 mm	1.27	9.84	50.79
27NWYE11400	16" => 400 mm	1.43	9.84	55.31



ITEM: **NWYE11**

DESC: WYE LATERAL 45° - LONG SPIGOT
SDR 11



DRAWING No:
NI10288

SHEET OF	REV.
1 1	0

www.nupiamericas.com - info@nupiamericas.com

All dimensions have to be considered in inches with 5% tolerance if not otherwise mentioned excluding values as per standard ASTM F2389